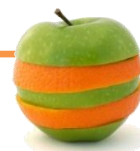


February 2025
January Claim
Month



Nuggets of News



No Postings



No Pay!

2024-2025 unannounced reviews in progress so stay ready!!

- [Posted Building for the Future \(English & Spanish\) & WIC Brochures.](#)
 - CN Labels **MUST** be available.
 - Infant/Child Menus **MUST** be posted.
 - **Current** dated Menu posted.
 - Serve at **approved** mealtimes.
 - **TWO** thermometers required.
 - **Bank account changes** are due by the **10th** of each month for timely processing.
- [GSK, Shelby County Commissioners, 100 Black Men of New York & Black Voters Matter](#) are helping to fund our mission to make nutrition a priority for children by educating childcare providers by taking the actions below:
- ✓ **DONATE** to this cause at www.alphaomegafnp.org & select the **Donate Now** button!
 - ✓ Share this link with a friend! Thank you!

Follow us on social media!
www.facebook.com/AlphaOmegaFNP/
Instagram: [@AlphaOmegaFNP](https://www.instagram.com/AlphaOmegaFNP)



Delorace	Parker	02 / 01
Brandi	Richardson	02 / 01
Tanya	Ragland	02 / 04
Eva R	Jones	02 / 11
Juliette	Jackson	02 / 20

Visit www.AlphaOmegaFNP.org for a special message!

Alpha & Omega Nutrition Program, Inc. | 3668 W. Big Ben Drive | Memphis TN 38116
www.AlphaOmegaFNP.org alphaomegafnp@gmail.com 901-360-1000

2025 Theme:

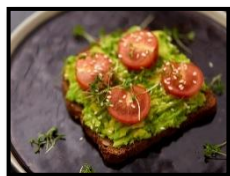
“THE YEAR OF ASCENSION AND POSSESSION!”



WHAT'S GOING ON NOW?

- ✓ Please stay aware of how the current administration changes affect your business funding as more information unfolds- Click [here](#) to view federal policy update.
- ✓ **Unannounced ONSITE REVIEWS** for 2024-2025 **are now being conducted from February 2025 through September 2025.**
(Any unsuccessful reviews will result in no payment for the day and no access to KidKare until review has been completed.)

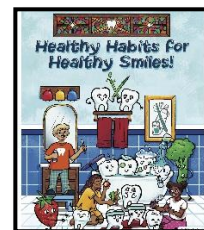
National CACFP Week: March 16 - 22, 2025
Click on image below to download flyer!



February Snack Attack: **Avocado and tomato slices on toast (Vegetable/Grains)!** Try out these [#CACFPcreditable snacks](#) when you plan your next grocery trip!

February is...

National Children's Dental Health Month! This month-long observance raises awareness of children's oral health. The American Dental Association (ADA) sponsors the event! Click [here](#) for resources & more info.



Civil Rights Training

All childcare personnel must take the civil rights training online www.AlphaOmegaFNP.org under the Main Portal, Civil Rights.

You have our support... We are here to work with you!

View [New Claim Due Date Change Memo](#). **CLAIMS DUE BY THE 1st DAY MONTHLY IN 2023-2024 TO ENSURE TIMELY REIMBURSEMENT! ALL LATE CLAIMS WILL BE PROCESSED AT MONTH-END!**

Family Day Homes

Definition: Children served in your home.

SUBMIT UPDATED COPY OF YOUR LICENSE AS SOON AS IT IS RECEIVED!



- **All sites must always adhere** to their approved meal service times. If your time needs to be adjusted, please complete a meal schedule change form and submit it for approval.
- **Submit applications daily as children are enrolled**
- **Daily documentation** of meals and attendance is **required** to be compliant. Read the [Daily Documentation Requirement Memo](#).
- Remember to serve and choose at least **one whole grain rich food per day** in KidKare when documenting daily meals and attendance.

Daycare & Adult Care Centers

Definition: Adults or children served in a commercial property/facility.

SUBMIT UPDATED COPY OF YOUR TN ADULTCARE OR CHILDCARE LICENSE!



- **All sites must always adhere** to their approved meal service times. If your time needs to be adjusted, please **complete a meal schedule change form and submit it for approval**.
- Children enrollment application **due by the 20th** of each month (**DO NOT WAIT TO SUBMIT WITH RECEIPTS AT END OF MONTH**)
- **Daily documentation** of meals and attendance is **required** to be compliant. Read the [Daily Documentation Requirement Memo](#).
- Examine your **Milk Audit in KidKare weekly** to be sure you have purchased enough milk to be compliant and avoid costly loss!
- Provide CN label proof when asked by monitor. See [CN label booklet](#).
- Please **use your Center Receipt Journal**, found in KidKare/Minute Menu, as a check and balance to **make sure all your receipts are accounted for & in date order**, as listed on the journal. **Do not purchase personal items on the same receipt as your daycare purchases.**

At-Risk Aftercare Sites

Definition: Children served after school in a safe structured facility with planned activities.



- As a reminder, all sites **shall not exceed your Sponsor's approved capacity**.
- **All children must be seated and served on site to be eligible for meal reimbursement.**
- **Daily** documentation of meals & attendance is **required** to be compliant. Keep **accurate** daily records. Read the [Daily Documentation Requirement Memo](#).
- **Review your monthly check list** to ensure all required documents are submitted.



REMINDERS!

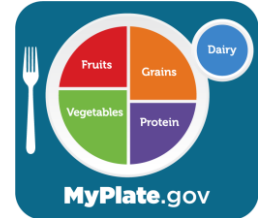
KidKare/Minute Menu support
972-671-5211

support@kidkare.com

Educate yourself in KidKare by utilizing the "Get Help" option to self-train.

PLEASE APPLY SYSTEM UPDATES FOR THE LATEST AND BEST VERSION OF KIDKARE!

Your menu in KidKare will be used for monitoring reviews. **Keep them current monthly**, print and post them as well. **Enter your daycare closures** in KidKare whenever your daycare will be closed during a meal service time. **Enter meals and attendance daily** to avoid loss of reimbursement and to be compliant.



- ✓ **No postings! No payment!**
- ✓ Self-composed menus minus creditable meal components = **disallowances**.
- ✓ Take 5 minutes monthly to plan & schedule menus in KidKare.
- ✓ Teach children how to measure foods for health, safety & wellness.
- ✓ Plan a healthy cook day & get children involved.

NON-CREDITABLE MILK:

- ✓ **2% MILK**
- ✓ **Almond** milk
- ✓ **Rice** milk
- ✓ **Coconut** milk
- ✓ **Cheese** (cheese is a meat alternate)

CREDITABLE MILK:

- ✓ Lactose free & lactose reduced milk
- ✓ Soymilk, Silk Milk, Pearl, Ultra Soy & Continent Soymilk

MILK REQUIREMENTS:

- ✓ Breakfast
- ✓ Lunch
- ✓ Supper

MENU CONCERNS:

- ✓ **WHOLE GRAIN NOT MARKED** – slide tab to **YES** under grain to indicate whole grain served.

Check for Meal Pattern requirements & resources at www.alphaomeganfp.org.